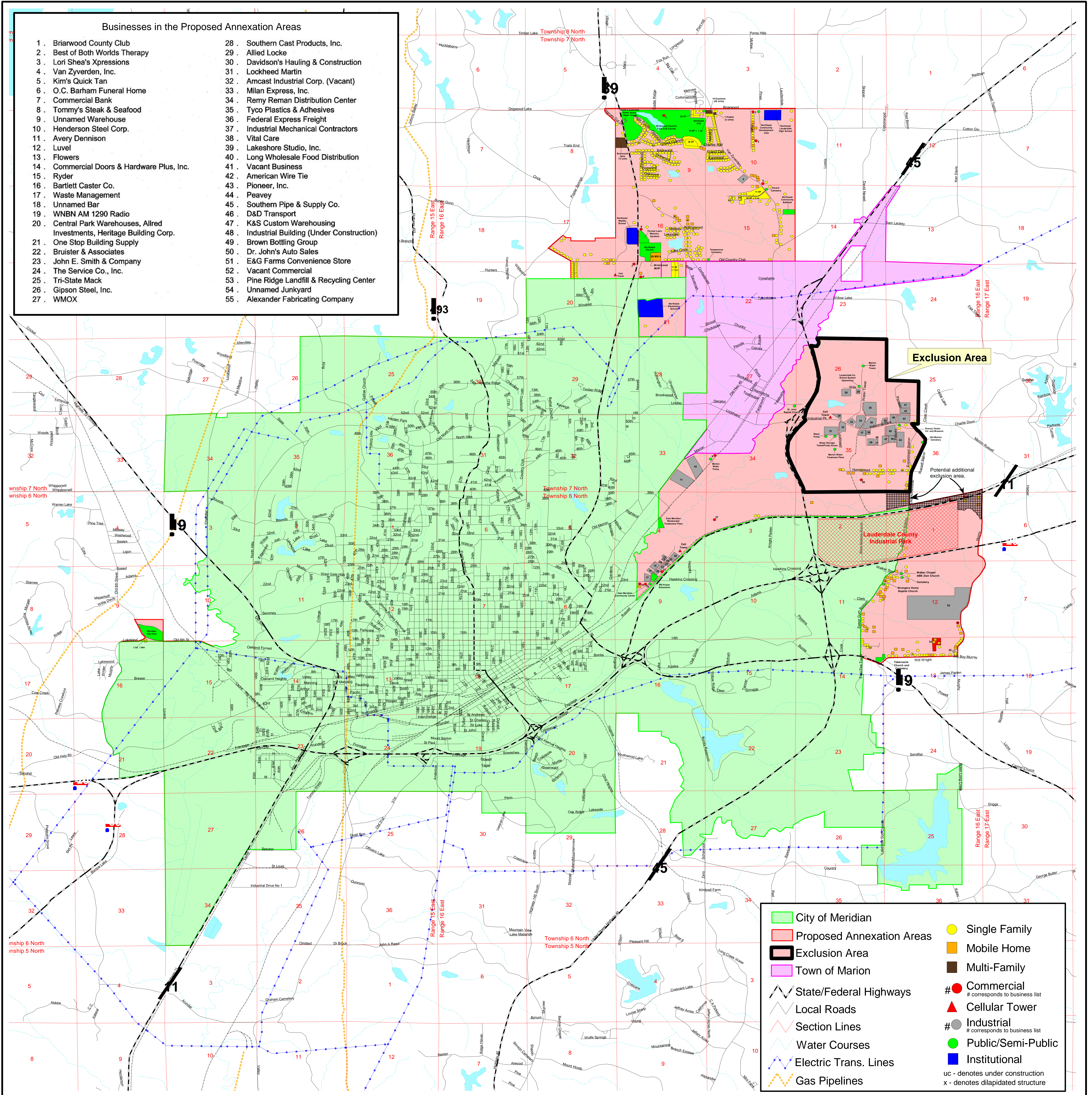


Businesses in the Proposed Annexation Areas

- | | |
|---|---|
| 1 . Briarwood County Club | 28 . Southern Cast Products, Inc. |
| 2 . Best of Both Worlds Therapy | 29 . Allied Locke |
| 3 . Lori Shea's Xpressions | 30 . Davidson's Hauling & Construction |
| 4 . Van Zyverden, Inc. | 31 . Lockheed Martin |
| 5 . Kim's Quick Tan | 32 . Amcast Industrial Corp. (Vacant) |
| 6 . O.C. Barham Funeral Home | 33 . Milan Express, Inc. |
| 7 . Commercial Bank | 34 . Remy Reman Distribution Center |
| 8 . Tommy's Steak & Seafood | 35 . Tyco Plastics & Adhesives |
| 9 . Unnamed Warehouse | 36 . Federal Express Freight |
| 10 . Henderson Steel Corp. | 37 . Industrial Mechanical Contractors |
| 11 . Avery Dennison | 38 . Vital Care |
| 12 . Luvel | 39 . Lakeshore Studio, Inc. |
| 13 . Flowers | 40 . Long Wholesale Food Distribution |
| 14 . Commercial Doors & Hardware Plus, Inc. | 41 . Vacant Business |
| 15 . Ryder | 42 . American Wire Tie |
| 16 . Bartlett Caster Co. | 43 . Pioneer, Inc. |
| 17 . Waste Management | 44 . Peavey |
| 18 . Unnamed Bar | 45 . Southern Pipe & Supply Co. |
| 19 . WBNB AM 1290 Radio | 46 . D&D Transport |
| 20 . Central Park Warehouses, Allred Investments, Heritage Building Corp. | 47 . K&S Custom Warehousing |
| 21 . One Stop Building Supply | 48 . Industrial Building (Under Construction) |
| 22 . Bruister & Associates | 49 . Brown Bottling Group |
| 23 . John E. Smith & Company | 50 . Dr. John's Auto Sales |
| 24 . The Service Co., Inc. | 51 . E&G Farms Convenience Store |
| 25 . Tri-State Mack | 52 . Vacant Commercial |
| 26 . Gipson Steel, Inc. | 53 . Pine Ridge Landfill & Recycling Center |
| 27 . WMOX | 54 . Unnamed Junkyard |
| | 55 . Alexander Fabricating Company |



**Land Use Map (2004)
Proposed Annexation Areas
City of Meridian, Mississippi**

